

COMPACT DIGITAL RECEIVER OPERATION MANUAL

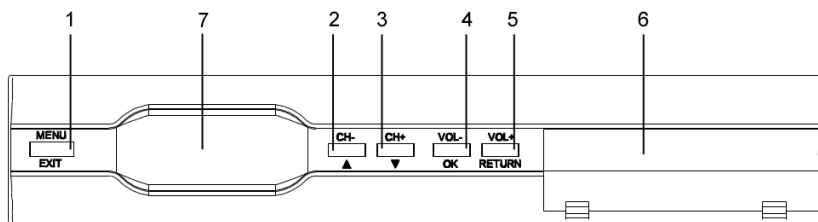
DVB
Digital Video
Broadcasting



DVB-C8080CO

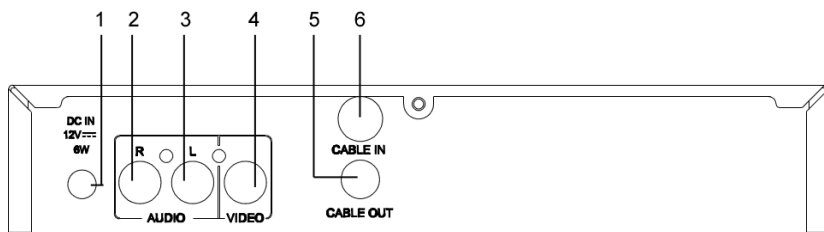
COMPACT DIGITAL
RECEIVER

FRONT PANEL



1. Menu entry/ exit
2. 3. Channel up or down/ cursor movement
4. Volume decrement/ operation confirmation
5. Volume increment/ menu go back
6. Open the lid to insert a smartcard
7. Status indicator/ remote sensor/ displaying panel

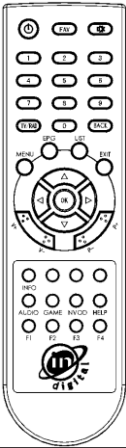
REAR PANEL



1. Plughole, power cord
2. Terminal, audio signal output, R
3. Terminal, audio signal output, L
4. Terminal, video signal output
5. Terminal, RF Signal loop out for connection to TV for Analog
6. Terminal, RF Cable signal Input

REMOTE

It's recommended to operate each function of the keys on the **Receiver** by using the key on the remote controller. Please read this section to lend itself to advance your understanding of the function of the **Receiver**.

STANDBY	Instruct the receiver to enter into standby mode or recover to normal viewing mode	
FAV	Display FAV LIST available on the STB.	
MUTE	Mute the audio or resume audio playback.	
0-9	In Menu for inputting the value In Non-menu, for channel selection	
MENU	Menu entry	
EPG	Non-menu, enters EPG interface, press the OK key to switch cursor from columns of channel and program	
LIST	Non-menu, enter TV LIST interface	
EXIT	MENU, return to the last grade interface	
UP / DOWN	In MENU, cursor movement In Non-menu, channel changing	
LEFT / RIGHT	In MENU, state alteration In Non-menu, volume adjustment	
OK	In MENU, operation confirmation In Non-menu, TV LIST	
V+/-	Volume adjustment	

P+/-	Normal operation channel change; page change in list mode
TV/ RAD	Non-menu, switch channel mode between TV and radio
BACK	MENU, go back; Non-menu, channel recall
INFO	Non-menu, display an information bar of the present channel, press the key once more to display its brief description
AUDIO	Non-menu, display audio options, press the directional key to opt for an option, press the OK key to confirm, press the EXIT key to exit
GAME	Non-menu, display game options
HELP	Non-menu, display STB information
F1-4	Special functional keys in certain situation

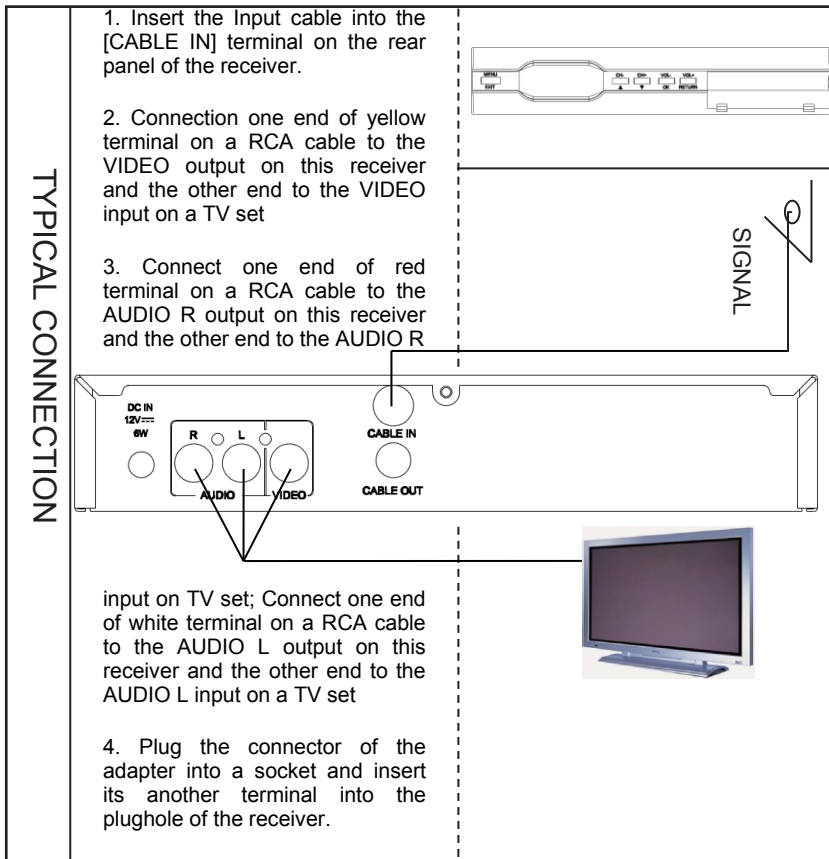
PRECAUTIONS ABOUT BATTERIES

Improper use of batteries may cause corrosion or fluid leakage. Please observe the following instructions for the safe use of batteries

1. Do not mistake the polarities (+ve and -ve ends) of batteries.
2. Never leave dead batteries in the remote control.
3. Remove batteries from the remote controller if is not going to be used for a long time.
4. Do not attempt to disassemble, short-circuit, heat recharge or expose the batteries into the fire.
5. Do not use a new battery & an old one together, or the one which is different type.
6. While replacing the batteries wipe away any electrolyte fluid inside the remote controller, and then insert new batteries.

CONNECTION

1. Connect the audio and video output terminals with the corresponding input terminal on a TV set
2. Insert the digital antenna cable into the [CABLE IN] terminal on the rear panel; please notice that the connection effect should be effective
3. The [CABLE OUT] loop out terminal needs to be connected to RF IN input on a TV set to provide RF signal for viewing Analog Channels.
4. Don't bundle the antenna cable with a power cord as it can cause interference



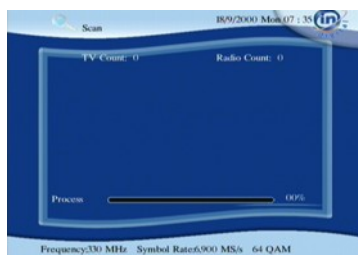
CHANNEL MANAGER

On Main Menu, highlight instruction of Channel Manager, use L/R key to enter or exit its sub-menu right side.



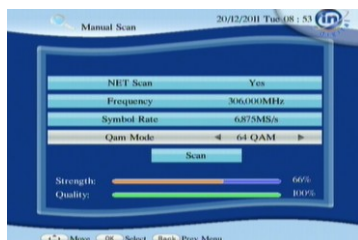
1. Auto Scan. Highlight [Auto Scan]. Press the OK key to start searching automatically.

After searching, the screen goes back to its program-viewing mode. Press the UP/DOWN key to change channel and the LEFT/RIGHT key to adjust volume.



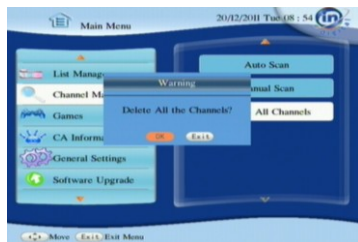
2. Manual Scan. Highlight [Manual Scan]; press the OK key to enter its submenu. Set NET Scan as Yes to scan channels by net, set NET Scan as No just to scan channels by the set parameters.

Input Frequency and Symbol Rate value by pressing the digital keys on the remote, set Qam Mode by pressing the L/R key.



As for the concrete parameter value, please contact local Cable Operator.

3. Delete All Channels. This instruction is designed to remove all channels scanned down, after pressing the OK key, input pin (0000) to go ahead, a warning box appears to query whether or not to remove all the existing channels. Use OK instruction to remove all.



CERTIFICATE OF WARRANTY

This certificate of warranty should be produced for servicing under the terms of the warranty.

CONDITIONS OF WARRANTY

1) Within one year from the date of purchase, if any component(s) is found to be defective due to faulty workmanship or defective material made, repairs will be executed free of charge and defective part will be replaced.

Parts repaired or replaced are under warranty throughout the remainder of the original warranty period only. Repairs under warranty may also be carried out only by authorized service centres or the authorized local cable operator.

2) This warranty does not cover any form of damage resulting from accident, misuse, application of incorrect voltage or any use contrary to the operating instruction supplied along with the equipment.

3) NO responsibility will be accepted for damage arising out of unauthorized modification or alterations of any nature made to the Digital Set Top Box.

4) NO claims will be accepted for damage incurred during transit of Digital Set Top Box.

5) This warranty is not valid if the serial number of the Digital Set Top Box has been deleted, defaced or altered.

6) This certificate of warranty should accompany the Digital Set Top Box if service under warranty period is required to be carried out at the authorized service centres.

7) The STB conforms functionally to the appropriate BIS standards.

WARRANTY CARD

Customer Details

Name: _____

Invoice Number& Date: _____ 00/00/0000

Purchase Date:
00/00/0000

Installation Date:
00/00/0000

Digital Set Top Box

Model Type:

Precautionary measure:

Please ensure that the following bar coded sticker is common between Set-Top-Box, Retail Box, and this user manual.

InDigital Franchisee /independent cable operator's Details

Signature: - _____
Franchisee/cable operator

Date: